

Viessmann Boiler Specifications

with ThermLink Dealer Price
(effective 01-Sep-2015)



Vitodens 100-W, WB1B wall-mounted condensing boiler

Model	WB1B	26	35
Rated input	MBH	37 - 91	37 - 118
Efficiency	% AFUE	94%	94%
Altitude Levels	ft.	up to 10,000 ft.	up to 10,000 ft.
Dimensions (inches)	Depth	14.13	14.13
	Width	15.75	15.75
	Height	28.5	28.5
Weight	lbs	78	78

ThermLink Dealer Price Call Call

Simple, reliable, and quiet with the perfect mix of price and performance. Optional combi for domestic hot water

Vitocrossal 300, CU3A gas-fired floor standing condensing boiler eliminates primary/secondary piping

Model	26	35	45	57
AFUE	%	95	95	95
Minimum Input (NG)	MBH	19	25	43
Maximum Input (NG)	MBH	94	125	160
Net AHRI Rating	MBH	76	101	129
Overall Dimension†	Width	Inches	26	26
	Height	Inches	67	67
	Depth (Length)	Inches	27	31.5
Weight	lbs	269	275	341
Boiler Water Content	USG	13.5	13	18.8

ThermLink Dealer Price Call Call Call Call

NEW in 2015 - great for cast iron changeouts since primary/secondary piping not needed

Vitodens 222-F, B2TA gas-fired floor standing condensing boiler and DHW heating system

Model	B2TA	19	35
Min. Input	MBH	12	19
Max. Input	MBH	67	125
Dimension	Width	in.	23.5
	Height	in.	65.5
	Depth	in.	23.5
DHW Storage Tank	Capacity	USG	26.5
	Max. Allowable Working Pressure	psig	150
Continuous Draw Rate*	gpm	1.8	3.3
Max. Draw Rate* (over 10 min. period)	gal	44	60
Weight	lbs	313	313

ThermLink Dealer Price Call Call

Boiler and domestic hot water in one. Floor-standing design perfect for upgrading an outdated boiler and DHW system



Viessmann Boiler Specifications

with ThermLink Dealer Price
(effective 01-Sep-2015)

Residential through commercial applications. Performance and versatility with combustion management and powerful controls. Easy to setup and cascade



Vitodens 200-W, B2HA gas-fired wall-mounted condensing boiler

Model	B2HA	19	28	35	45	60	80	100	112	150
Min. Input	MBH	12	19	19	60	60	104	104	113	113
Max. Input	MBH	67	100	125	160	212	285	352	399	530
Dimension	Width	in.	17.75	17.75	17.75	19	19	19	23.63	23.63
	Height	in.	41	41	41	40.63	40.63	43.5	43.5	44.5
	Depth	in.	14	14	14	15	15	21	21	27.1
	Weight	lbs	101	106	106	155	155	194	194	298

ThermLink Dealer Price Call Call Call Call Call Call Call Call Call

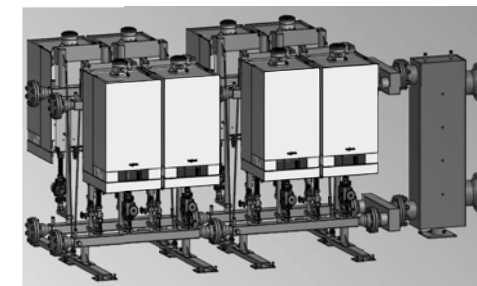
Vitodens 200-W Cascade Systems

up to 8 boilers with a single control

Can cascade up to 8 boilers (up to 4,240 MBH input)

Model	B2HA	45	60	80	100	112	150
Minimum Input (single boiler)	MBH	60	60	104	104	113	113
Maximum Input (single boiler)	MBH	160	212	285	352	399	530
Minimum Input (multiple of 8)	MBH	60	60	104	104	113	113
Maximum Input (multiple of 8)	MBH	1,280	1,696	2,280	2,816	3,192	4,240
Weight (single boiler)	lbs	155	155	194	194	298	298

Call ThermLink for Pricing - varies by configuration



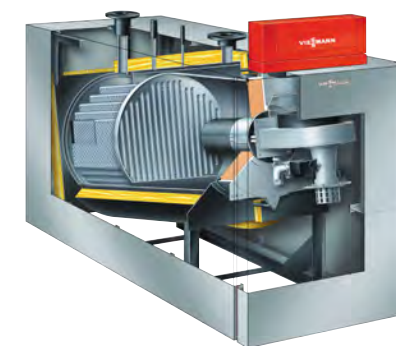
Light to medium commercial applications. Great changeout unit for schools, churches, etc. Easy to setup and cascade

Vitocrossal 200, CM2 gas-fired condensing boiler

Can cascade up to 8 boilers (up to 17,960 MBH input)

Model	CM2	CM2-186	CM2-246	CM2-311	CM2-400	CM2-500	CM2-620
Combustion Efficiency*	%	95	95	95	95.1	95.1	95.1
Thermal Efficiency*	%	97	97	97	95	95	95
Minimum Input (NG)	MBH	133	175	222	287	358	450
Maximum Input (NG)	MBH	663	878	1,112	1,445	1,800	2,245
Output*	MBH	643	851	1078	1372	1710	2132
Net AHRI Rating	MBH	559	740	937	1193	1487	1854
Overall Dimension†	Width	Inches	36.5	36.5	36.5	42.4	44.3
	Height	Inches	66	66	66	65.6	68.75
	Depth (Length)	Inches	73	73	73	89.5	100.7
Weight (burner, control and insulation)	lbs	726	759	792	1495	1662	1929
Boiler Water Content	USG	81	77	74	104	112	131

ThermLink Dealer Price Call Call Call Call Call Call



Cascade configuration up to 8 boilers with a single control

